

# TRUMP

# Space Saver Plus

## VM-350

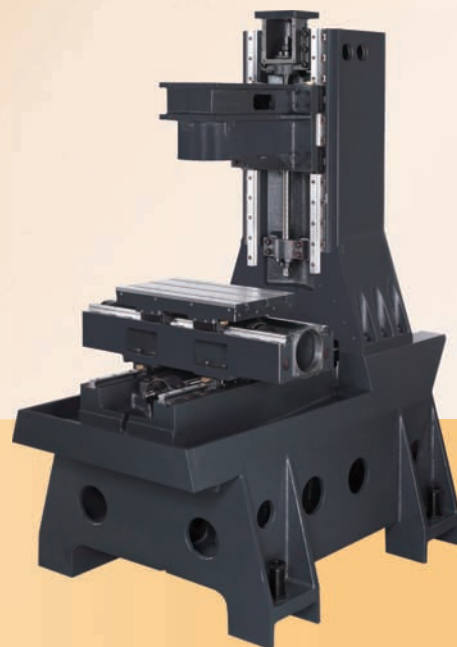
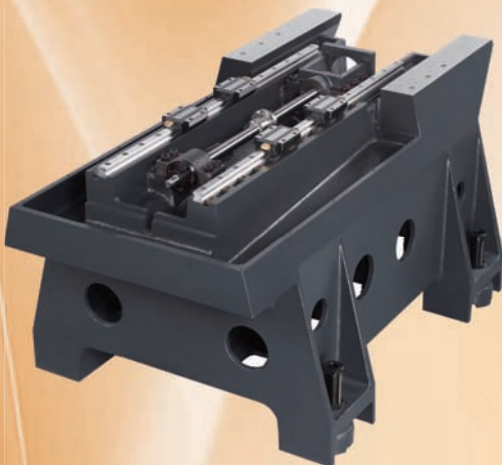
## VERTICAL

## MACHINING

## CENTER



- ✓ Table Size :  
15.7" x 9.8"
- ✓ XYZ Travel :  
13.7" x 9.8" x 11.8"
- ✓ Dimensions(LxWxH) :  
63" x 51" x 75"



# Specification

Model	VM-350 Space Saver Plus	
<b>TABLE</b>		
Table Size	15.7 x 9.8	in
Max Weight on Table	132	lbs
<b>TRAVELS</b>		
X / Y / Z AXIS	13.7 / 9.8 / 11.8	in
Spindle Nose to Table	2.8 ~ 14.6	in
<b>SPINDLE</b>		
Motor	3	HP
Speed	10,000 / opt. 30,000	rpm
Taper	BT-30	
<b>AXIS MOTORS</b>		
X / Y / Z Axis	0.75 / 0.75 / 1.0	kW
X / Y / Z Rapid Traverse	394"	ipm
<b>AUTOMATIC TOOL CHANGER</b>		
ATC Type	Armless	
Tool Shank	BT-30	
Tool Capacity	8	
<b>OTHER</b>		
Machine Weight (N.W)	2646	lbs
Machine Dimensions (LxWxH)	63 x 51 x 75	in
Air Pressure Required	90	psi
Coolant Pump	3/8	HP
Lubrication Pump	1/4	HP
Electric Power	10	KVA

## Standard Accessories

- CENTROID controller (USA made)
- Auto lubrication system
- Coolant System
- Full enclosure
- Operation and programming manual
- Tool box
- 8-Tool armless magazine (BT-30)
- Heat exchanger
- Leveling bolts and pads
- Working light

## Option Accessories

- Touch probe DP-4
- 4th axis rotary table
- 30,000 rpm spindle (ISO25)
- Automatic voltage regulator
- Spindle chiller
- Oil mist collector
- TT-1 tool touch off kit



**Machines in Motion, Inc.**  
**Sales - Service - Training**  
**Factory direct domestic sales**  
**Contact Doug Laursen**  
**(714) 404-2996**





993 Carbon Canyon Rd. Chino Hills, CA 91709  
Office: (714) 528-7061 Fax: (714) 528-4892

### **Machines in Motion, Inc.**

Our primary focus is the installation of new Centroid CNC controls on to experienced CNC machine tools. This puts us in contact with many customers weighing the pros and cons of a CNC control upgrade against the cost of a new CNC mill. We sell and fully support the Atrump line of CNC mills built with the Centroid CNC controller.

Because Machines in Motion, Inc. is not a traditional *hard sell* machinery dealer you won't see a lot of fancy web pages, videos, or in your face advertising. We like our customers! We work hard to provide you with the right machine to fit your business needs.

Atrump machines are built with classic box way construction. A well proven technology using hand scraped – Turcite sliding surfaces, High pressure lube systems, and digital AC Brushless servo motors & drives. Couple these features with the simple to use Centroid CNC controller and you too will see a noticeable improvement in shop productivity.

### **Visit one of our other web sites.**

**Centroid users club:** <http://www.centroidusersclub.com/> where we answer your questions to the benefit of all Centroid control users.

**Control retrofit site:** <http://cnc-machine-controls.com/> Information about upgrading your existing CNC machine with the professional level Centroid CNC control.

**New CNC Mills site:** <http://cncmachinesinmotion.com/> Information about new CNC milling machines with the professional level Centroid CNC control.